

## PRUNING SAW



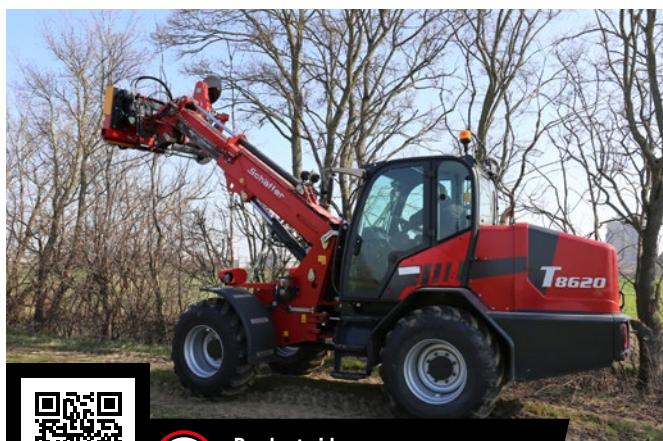
The hydraulic pruning saw is used to efficiently cut back dense hedges or trees. Three large saw blades, each with a diameter of 60 cm, cut branches up to 15 cm thick. The sturdy mounting frame allows for hydraulic lateral displacement and stepless lateral swivelling.

### Advantages at a glance

- 3 saw blades with 60 cm diameter
- Hydraulic lateral displacement for safe road travel and distance to the cab
- Stepless tilt adjustment
- With switchover valve as standard, therefore only 1 double-acting connection required

### Loader requirements

- Depressurised return line
- Locking detent
- Speed regulation
- 1 double-acting connection
- 12 volt electrical connection in the cab
- Min. 45 l/min hydraulic power



Product video:  
[schaeffer.de/118-en](https://schaeffer.de/118-en)

Width	Min. oil quantity	Weight	Z 070 Z	L 070 T	Z 070 Z	Z 080 Z	L 080 T	Z 080 Z	L 080 T	L 020 T	L 040 T	L 060 T
1.75 m	45 l/min	420 kg	☐	☐	☐	☐	■	☐	■	■	■	■

Available with all standard holding fixtures. ☐ = suitable ■ = extremely suitable