

PRUNING SHEARS



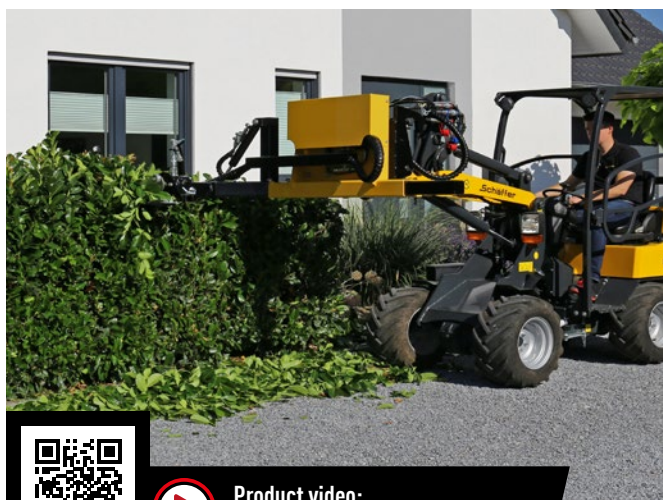
With these pruning shears, you can trim hedges and trees quickly and carefully. The pruning shears can cut branches up to 5 cm thick. Thanks to the hydraulic tilt adjustment, the pruning shears are adjusted steplessly and perform vertical, horizontal or angled cuts. The mounting frame also features mechanical lateral displacement.

Advantages at a glance

- Stepless tilt adjustment
- Branch thickness up to 5 cm
- With switchover valve as standard, therefore only 1 double-acting connection required

Loader requirements

- Depressurised return line
- Locking detent
- Speed regulation
- 1 double-acting connection
- 12 volt electrical connection in the cab



Product video:
schaeffer.de/115-en

Width	Min. oil quantity	Weight	1422 / 14e	1622 / 16e	2024	2024 SLT	2028	2028 SLT	23e	23e T	24e	24e T	2428	2428 SLT	2430	2430 SLT	2445 S	2628	2630	2630 SLT	2630 T SLT	3630	3650	3650 SLT	3650 T	3650 T SLT	4670
1.50 m	25 l/min	210 kg	■	■	■	■	■	■	■	■	■	■	■	■	■	■	■	■	■	■	■	■	■	■	■	■	■

Available with all standard holding fixtures. □ = suitable ■ = extremely suitable